

- 1
- 2
- 3
- 4
- 5
- 6
- 7
- 8
- 9
- 10
- 11
- 12
- 13
- 14
- 15
- 16
- 17
- 18

**SPECIFICATION**

- Type E: With eyelet washer

Pin

AISI 303 stainless steel

Washer

Stainless steel AISI 316LHC

Metal injection molded

Ball

Stainless Steel AISI 420C

Compression spring

Stainless steel AISI 631

**FEATURES AND APPLICATIONS**

Stainless steel locking pins GN 124.3 are used for quick fixing, connecting and locking of various jig and fixture systems.

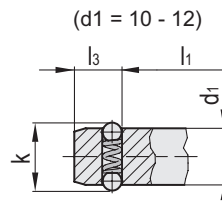
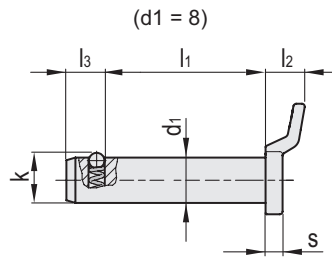
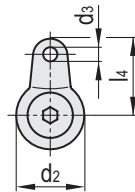
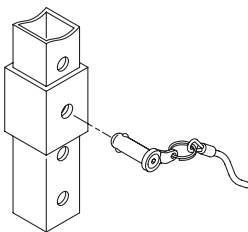
The locking balls are held in position by a compression spring and are therefore not rigidly locked. The pins can be quickly and easily inserted and removed from the locating hole.



**ACCESSORIES**

- Ball Chains GN 111 (see page ) / GN 111.5
- Stainless Steel Retaining Cables GN 111.2 (see page )
- Spiral Retaining Cables GN 111.4 (see page )

Application example



Code	Description	d1 -0.04 -0.08	d2	d3	l1	l2	l3	l4	k	s	Mounting hole	Double sided shearing force [KN]#	⚖️
GN.17581	GN 124.3-8-15-E	8	12	2.5	15	7	6.3	13.5	8.7	3	8	40	12
GN.17582	GN 124.3-8-20-E	8	12	2.5	20	7	6.3	13.5	8.7	3	8	40	14
GN.17583	GN 124.3-8-25-E	8	12	2.5	25	7	6.3	13.5	8.7	3	8	40	16
GN.17584	GN 124.3-8-30-E	8	12	2.5	30	7	6.3	13.5	8.7	3	8	40	18
GN.17585	GN 124.3-8-50-E	8	12	2.5	50	7	6.3	13.5	8.7	3	8	40	25
GN.17591	GN 124.3-10-15-E	10	15	2.5	15	7	8.7	15	12	3	10	62	22
GN.17592	GN 124.3-10-20-E	10	15	2.5	20	7	8.7	15	12	3	10	62	25
GN.17593	GN 124.3-10-25-E	10	15	2.5	25	7	8.7	15	12	3	10	62	28
GN.17594	GN 124.3-10-30-E	10	15	2.5	30	7	8.7	15	12	3	10	62	32
GN.17595	GN 124.3-10-50-E	10	15	2.5	50	7	8.7	15	12	3	10	62	41
GN.17596	GN 124.3-12-20-E	12	17	3	20	9	9.5	18.5	14.5	4	12	90	34
GN.17597	GN 124.3-12-30-E	12	17	3	30	9	9.5	18.5	14.5	4	12	90	43
GN.17598	GN 124.3-12-40-E	12	17	3	40	9	9.5	18.5	14.5	4	12	90	52
GN.17599	GN 124.3-12-50-E	12	17	3	50	9	9.5	18.5	14.5	4	12	90	61

Indexing and positioning elements

1 # Breaking strength